



Specialist coatings for modular buildings

A buyer's guide

INTRODUCTION

Modular buildings have surged in popularity in recent years providing businesses with an attractive space and storage proposition in uncertain times.

Modular buildings offer a practical and versatile option for factory expansion, delivering critical, semi-permanent facilities and a price competitive route to business growth.



WHY CHOOSE MODULAR BUILDINGS FROM A COATINGS PERSPECTIVE?

Modular buildings are a more affordable alternative to building an extension, offering both temporary and permanent functionality and able to withstand constant movement and transportation.

Modular buildings speed up the return on investment as a usable space. A quicker installation means that the time waiting to see a return on modular buildings is reduced, resulting in lower carrying costs to customers. The quick on-site installation of modular buildings mean they are an excellent choice in very changeable UK weather conditions.

Rapid installation also means that our end users see minimal disruption to their activities. Reducing site traffic which can massively impact specific sites such as highways, schools, hospitals, town and city centres.

Modular buildings are built in a controlled environment and are not left open to the elements, meaning they last much longer than other options. Modular buildings become part of an organisation's assets and can become a very visual part of the brand. That's where we come in.



TYPICAL USES OF MODULAR BUILDINGS

Applications:

- Construction sites
- Canteen blocks
- Toilet blocks
- Temporary events
- 'Pop up' buildings for retail and hospitality.



THINGS TO LOOK FOR IN A COATINGS PARTNER

You are investing in long term assets that might be moved frequently or installed in one location.

Either way, these buildings will need to be protected from the elements and any other damage caused by their operating environment.

Product range

You might need water-based coatings that are market leading in their ease of application, drying time and overall coverage, measured by cost per square metre applied.

Safety

Perhaps you seek low odour coatings for modular buildings that require health and safety compliance? Look for a partner who meets all requirements under COSHH essentials and provides products that are safe to use whilst fabricating in areas with only natural ventilation.

Flexibility

Look for experience of relationships with major manufacturers and refurbishers and examples of long-term consistency of application with systems to suit any paint shop.

Affiliations

For an industry that expects the best, look for a coatings partner that is a proud and active partner of the MPBA and who has a track record of providing cost effective solutions for long term asset protection.



WORKING WITH NEWSPACE CONTAINERS

"We are very pleased to be working in partnership with Pronto Paints.

They offer us a very good efficient service, from deliveries, technical support and supporting us with our customers. Their knowledge of the industry is excellent and nothing is too much trouble".

Mark Chamberlain, Business Development Director



CHALLENGES IN COATING MODULAR BUILDINGS

The use of modular building is increasing and brings with it some key considerations in terms of the coating application and finish. If coatings are not properly applied onto sufficiently well prepared surfaces, coating failure and breakdown are likely to occur.

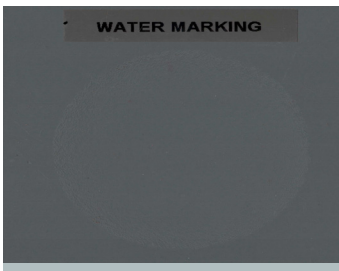


Colour consistency

Batch to batch consistency is the most important driver of coating selection in modular buildings. It is important to ensure a rigorous process is in place to support colour consistency. This includes having a consistent raw material that is checked and adhere to manufacturer certificates of analysis. The size of the production batch is important too. Product viscosity, mixing characteristics and process flow rate all need to be adjusted to ensure consistent and repeatable results. Coatings should be 100% QC tested, assessing things like density, pigment dispersion, colour and finish and viscosity.

Drying time

There are lots of things that affect drying times. This might be particular bottlenecks in production, the waiting on cold and wet days or the availability of warm ventilation to speed up the drying process.

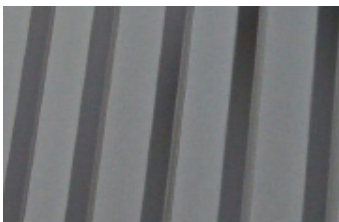


Paint defects

There are a wide variety of potential defects that may occur when applying coatings. Overspraying can cause a number of problems. Pinholes may appear after application due to surface temperature, high film thickness or evaporating solvent. Bleeding and staining of white and pale colours of pre-existing pigments. Wrinkling and lifting occurs when applying layers of synthetic coatings too quickly. Running and sagging is caused by inaccurate mixing and application. And the dreaded visual imperfection of 'orange peel finish' could result again from mixing and application errors.

Water spotting

Often light, whitish circular spots can appear, which can either swell or indent the surface of the coating. Depending on the exposure time to moisture and the freshness of the finish, the severity can range from mild, (possible recovery when dry) to severe, requiring re-coating of the finish.



Weathering, rust and cosmetic deterioration

The major considerations involve weathering, and long-term exposure of buildings to the elements, whether they are hot or cold. Some applications bring with them additional challenges in terms of water erosion and chemical corrosion too. Understanding the precise application and time span for the use of a coated modular building is paramount in the planning phase, certainly at the time of specifying the right coating.

Coating failures on residential and office modular buildings can sometimes come in the form of rusting. Rust staining occurs as a result of aggressive conditions within the structure itself which then causes the rust to run down the outside. It may also occur as a result of an incompatibility between old and newer paint types.

We have practical advice and solutions for all these issues and more.

Is it time to review your coating options?

HOW CAN PRONTO HELP

We manufacture a range of products, designed to be compatible with the many modular buildings, accommodation and mobile welfare units available in the UK.

QD Ultra High Solids OEM Primer Finish- 210:802



- Alkyd resin, one coat with anti-corrosive, designed for high volume OEM manufacturing
- Compliant to 0.37, i.e. users over 15 tonnes solvent per year
- Excellent durability
- Wide colour range
- Touch dry in 45 minutes

WATER BASED

ST1Kone- 600:333



- Suitable for modular buildings/site buildings
- Airless spray application
- Anti-corrosion pigmentation
- Fast drying water based formulation
- Touch dry in 30 minutes.

ST1Ktop- 600:503



- Adhesion tested to wide range of substrates
- Non-toxic, non hazardous formulation
- Full colour range
- Ideal for onsite refurbishment
- Touch dry in 15-30 minutes.

QUICK DRYING

2Pk Direct To Metal- 370:000



- Direct to metal two pack paint
- Tough anti-corrosive protective coating
- Good gloss and colour retention
- No primer required
- Suitable for chassis and trailer
- Touch dry in 40-60 minutes.

QD High Solids Semi Matt Primer Finish- 207:502



- Ideal for site cabin industry
- Quick drying mid sheen finish
- Airless spray application
- No priming required
- Touch dry in 45 minutes.

LOW ODOUR

Low Odour High Solids Primer Finish- 340:105



- Less than 420 g/l, suitable for sites using 5-15 tonnes solvent per year
- Fast drying yet xylene free
- Low sheen finish
- Ideal for site cabins and modular buildings.
- Touch dry in 1 hour.

Low Odour Brushing One Coat Primer Finish- 340:205



- Low odour coatings for brushing
- High opacity
- Anti-corrosive pigmentation
- Ideal for cladding and container refurbishment
- Touch dry in 1.5 hours.

For an industry that expects the best.

Proud and active members of the MPBA.

Cost effective solutions for long term asset protection.

WHY CHOOSE PRONTO FOR MODULAR?

Heritage

Over thirty years providing coatings solutions within buildings, facilities, metals, line-marking, plant and machinery, agriculture, utilities and commercial finishing. We continue to invest in equipment, factory footprint and staff.

Quality

A dedicated technical team that develops and tests coatings to meet the high standards your customers expect. Our quality expertise is unrivalled and covers most requirements including colour, spotting, scratch, flexibility, adhesion and UV. Live paint trials are a critical part of the quality process and these can be arranged at your premises.

Facilities

Access to a modern, fully computerised, just in time 89,00ft² facility across three sites in the heart of England. We run our production lines and commercial spray booth with some of the most cutting-edge technology available in Europe.

Service

Dedicated single point of contact for all enquiries. Flexible ordering and call off available on regular lines.

1989

Established



30 + years coatings sector experience



Three-time Coatings Care National Winner

300

products



Over 5000 colours



2.8m litres a year



36k of paint daily capability



Own fleet and logistics team



Approachable, expert team



Full traceability

Pronto Industrial Paints Ltd

Stainsby Close,
Holmewood Industrial Estate, Chesterfield,
Derbyshire, S42 5UG

Tel +44 (0) 1246 857777

Email info@prontopaints.com

Web <https://prontopaints.co.uk>